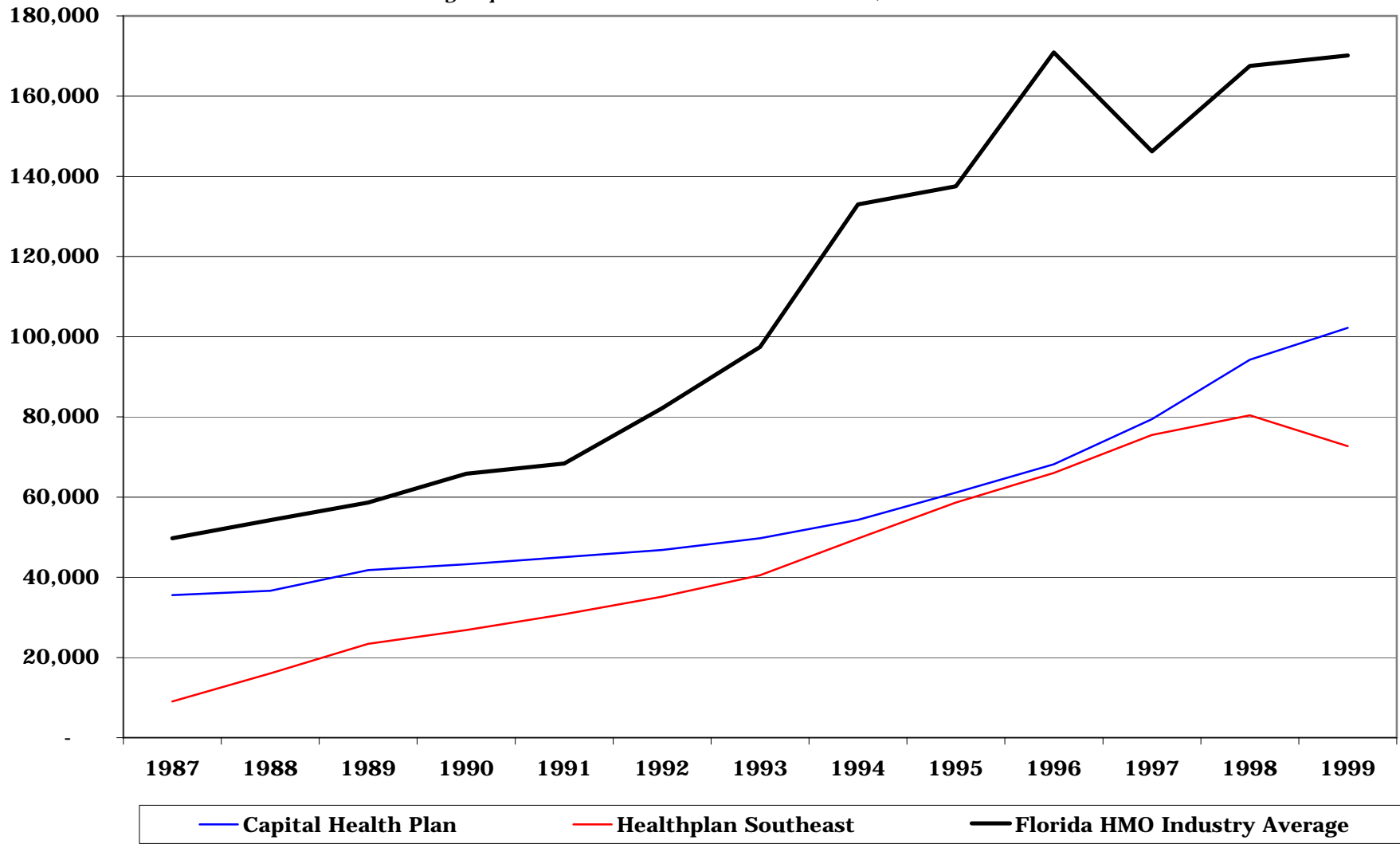


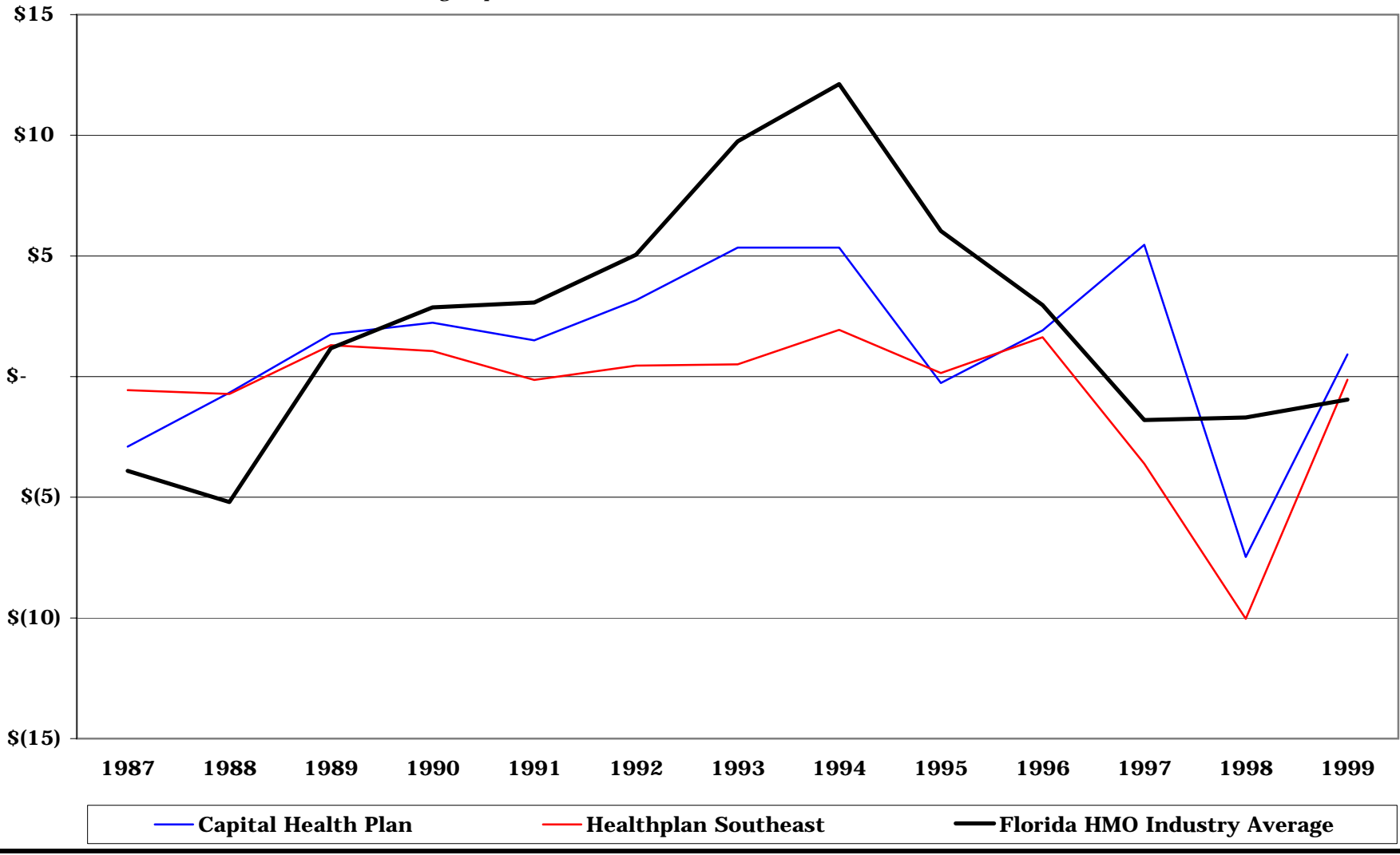
Total Enrollment

Capital Health Plan and Health Plan Southeast versus Florida Average*:

**Average represents all Florida HMOs with at least 10,000 enrollees*



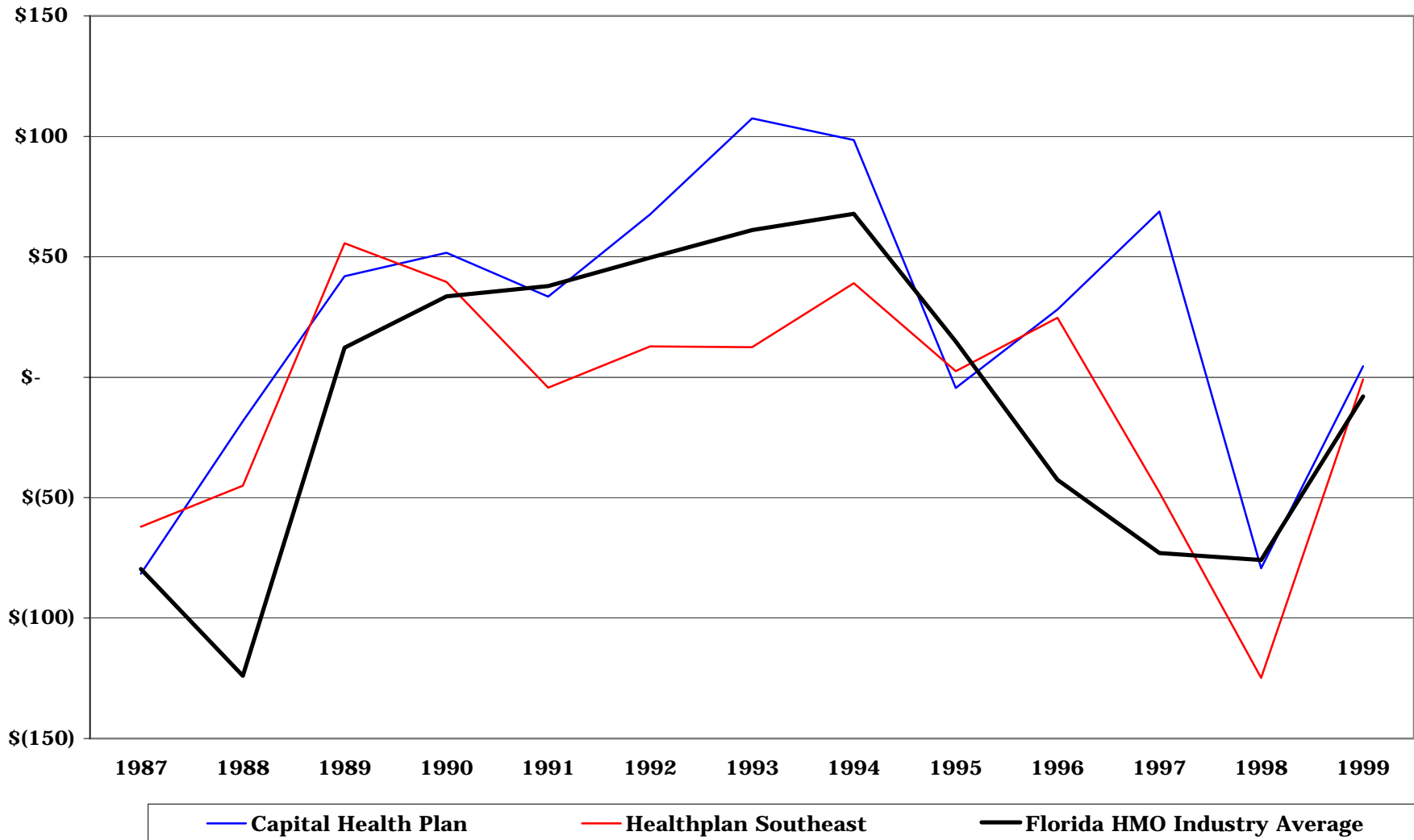
Net Profit (\$M)
Capital Health Plan and Health Plan Southeast versus Florida Average*:
Average represents all Florida HMOs with at least 10,000 enrollees



Net Profit per Enrollee

Capital Health Plan and Health Plan Southeast versus Florida Average*:

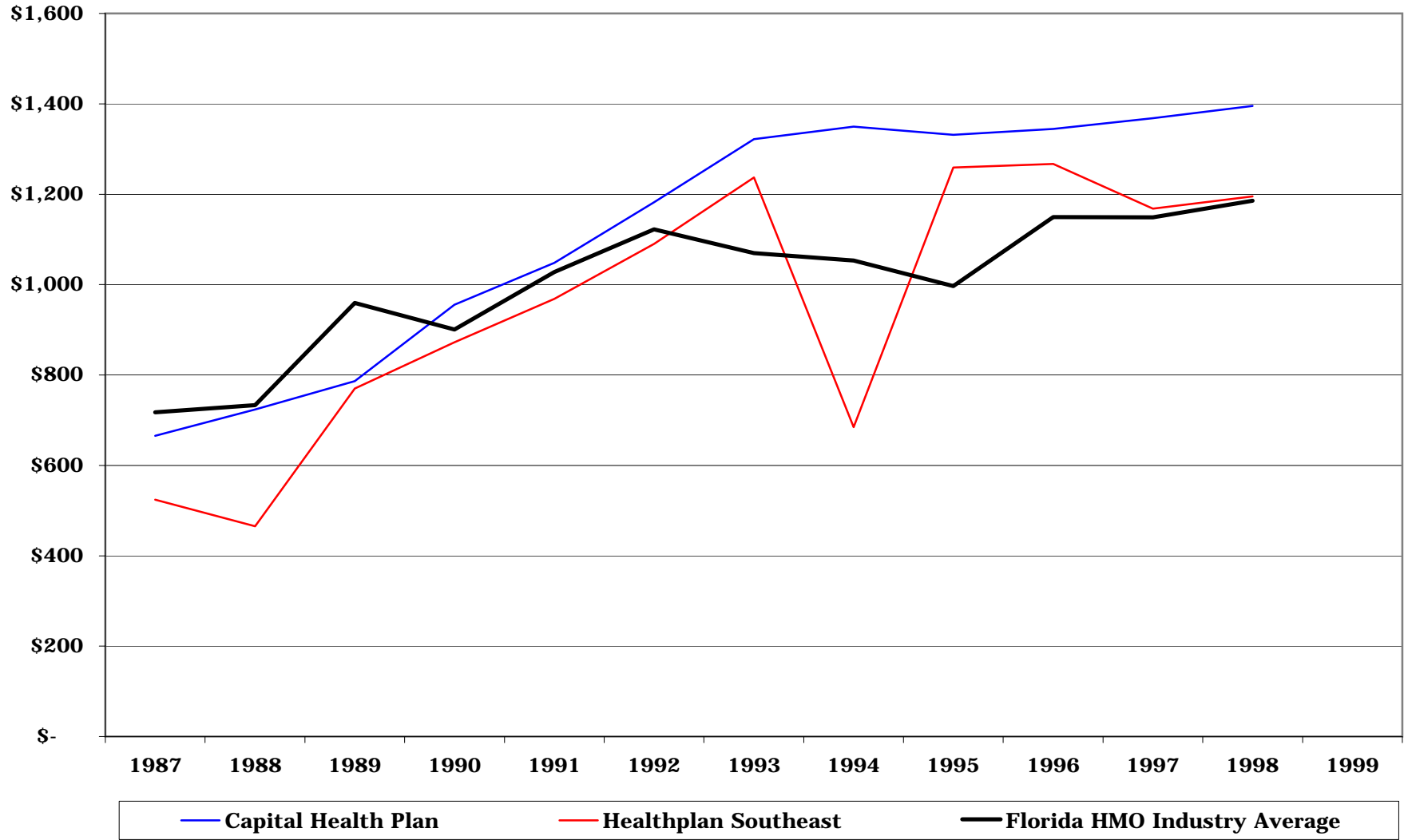
**Average represents all Florida HMOs with at least 10,000 enrollees*



Average Commercial Premium per Enrollee

Capital Health Plan and Health Plan Southeast versus Florida Average*:

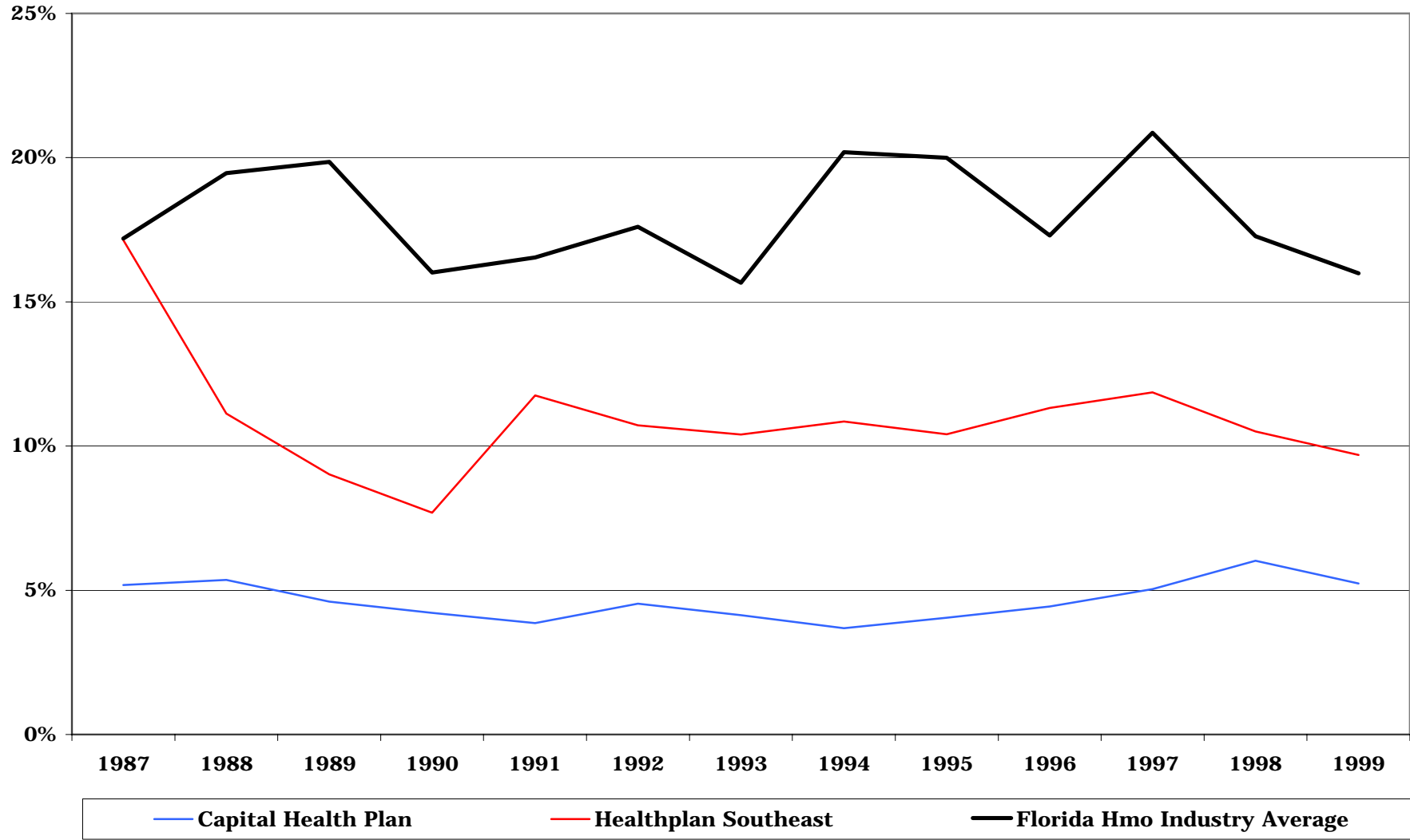
**Average represents all Florida HMOs with at least 10,000 enrollees*



Administration Expense as a Percent of Total Expense

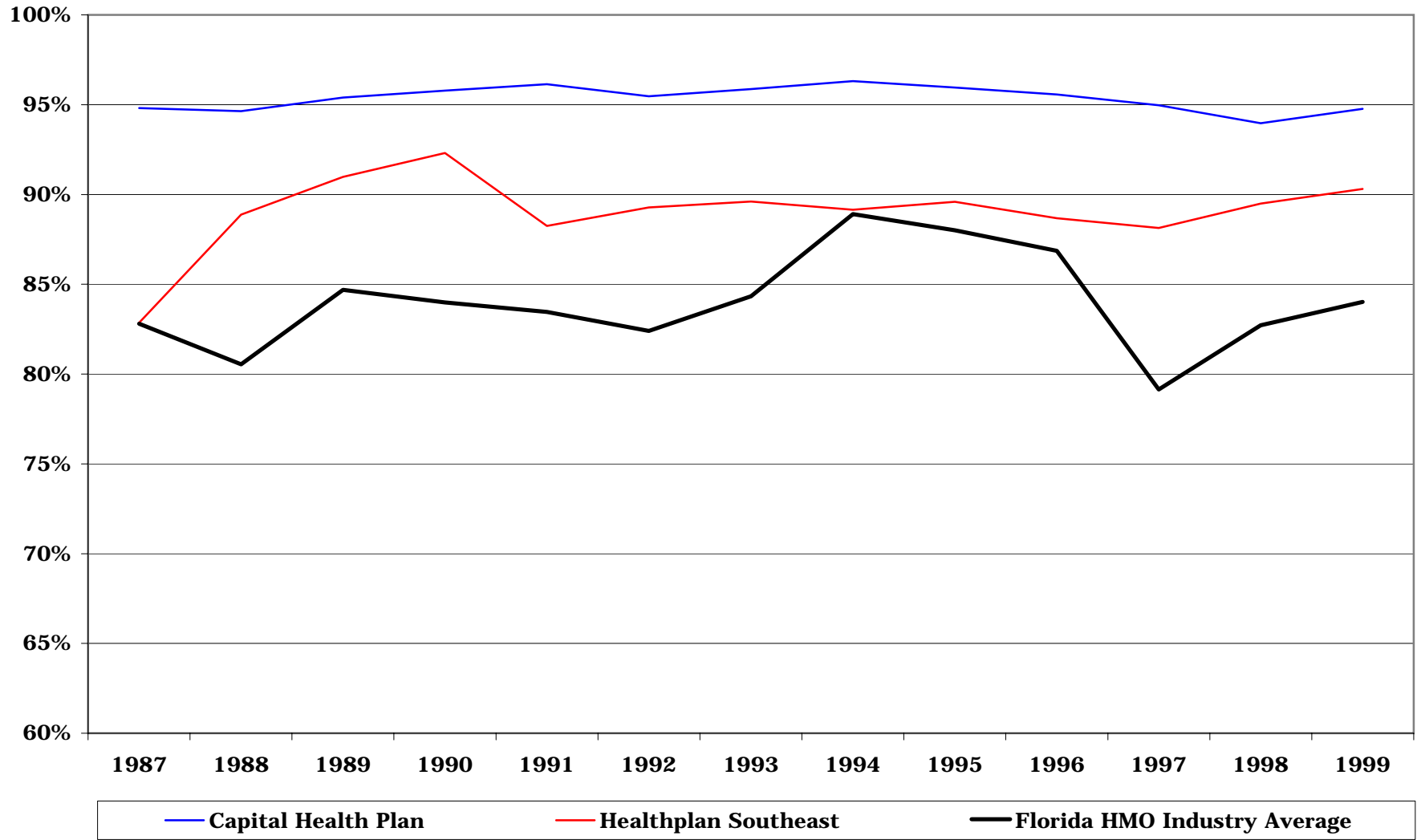
Capital Health Plan and Health Plan Southeast versus Florida Average*:

**Average represents all Florida HMOs with at least 10,000 enrollees*



Medical Expense as a Percent of Total Expense
Capital Health Plan and Health Plan Southeast versus Florida Average*:

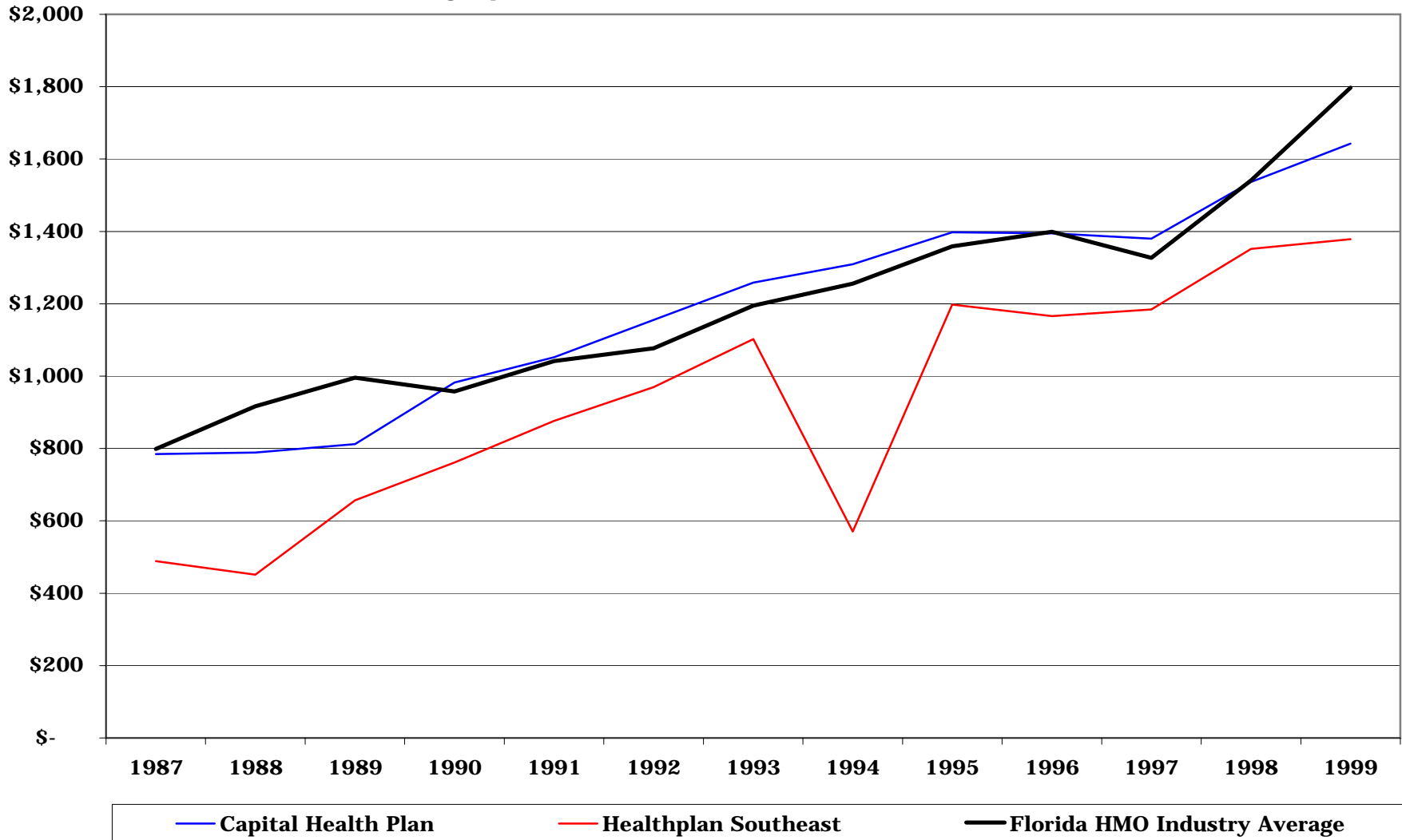
**Average represents all Florida HMOs with at least 10,000 enrollees*



Medical Expense per Enrollee

Capital Health Plan and Health Plan Southeast versus Florida Average*:

**Average represents all Florida HMOs with at least 10,000 enrollees*



Total Expense per Enrollee

Capital Health Plan and Health Plan Southeast versus Florida Average*:

**Average represents all Florida HMOs with at least 10,000 enrollees*

